


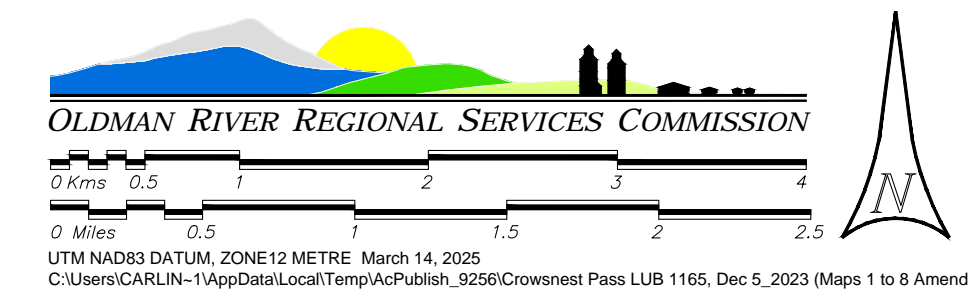
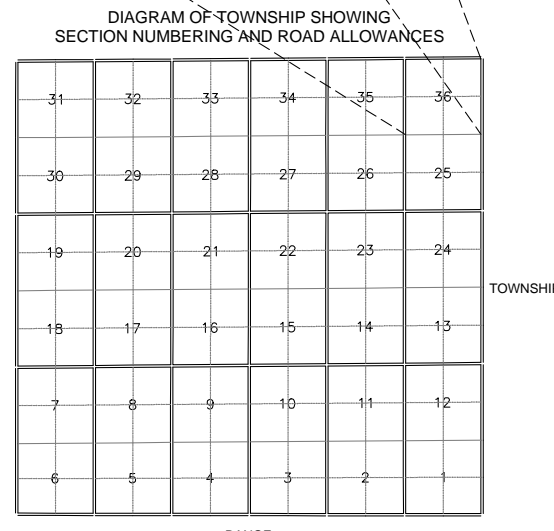
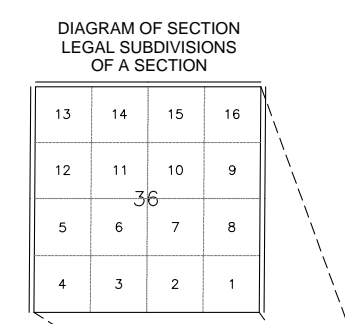
LAND USE DISTRICTS
 BYLAW NO. 1165, 2023; DECEMBER 5, 2023
 (Amended to and including Bylaw No. 1214, 2024)

-  Restricted Development Area RDA
-  Turtle Mountain Restricted Development Area DC-1

MAP 1

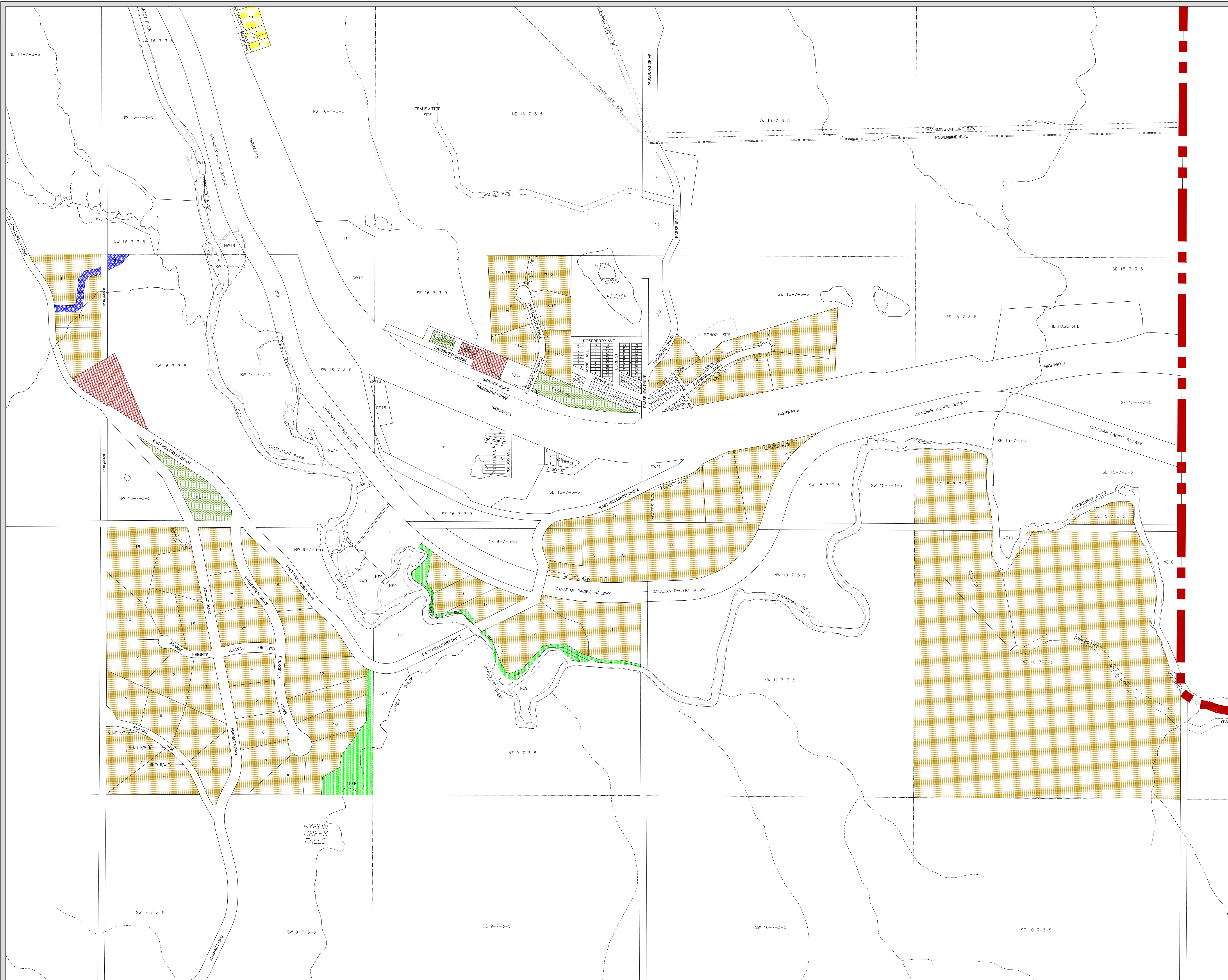
LEGEND:

-  Forest Reserve Boundary
-  Municipal Boundary (As Of May 20, 1998)
-  Highway No. 3
-  Railway CPR
-  Other Roads / Streets
-  Restricted Development Area



UTM NAD83 DATUM, ZONE 12 METRE, March 14, 2025
 C:\Users\CARLIN-1\AppData\Local\Temp\AcPublish_9256\Crowsnest Pass LUB 1165, Dec 5, 2023 (Maps 1 to 8 Amended to Bylaw 1214-2024).dwg

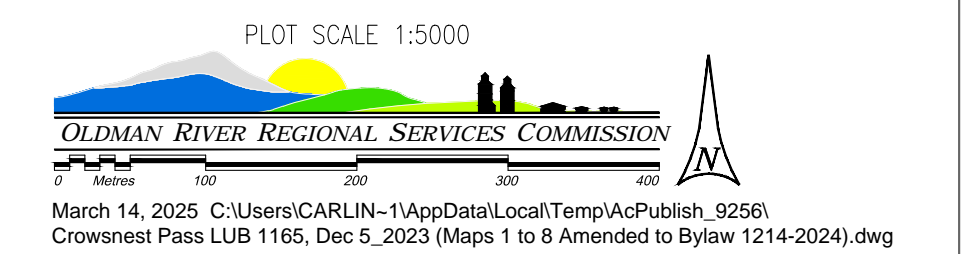
MUNICIPALITY OF CROWNEST PASS - PASSBURG AREA

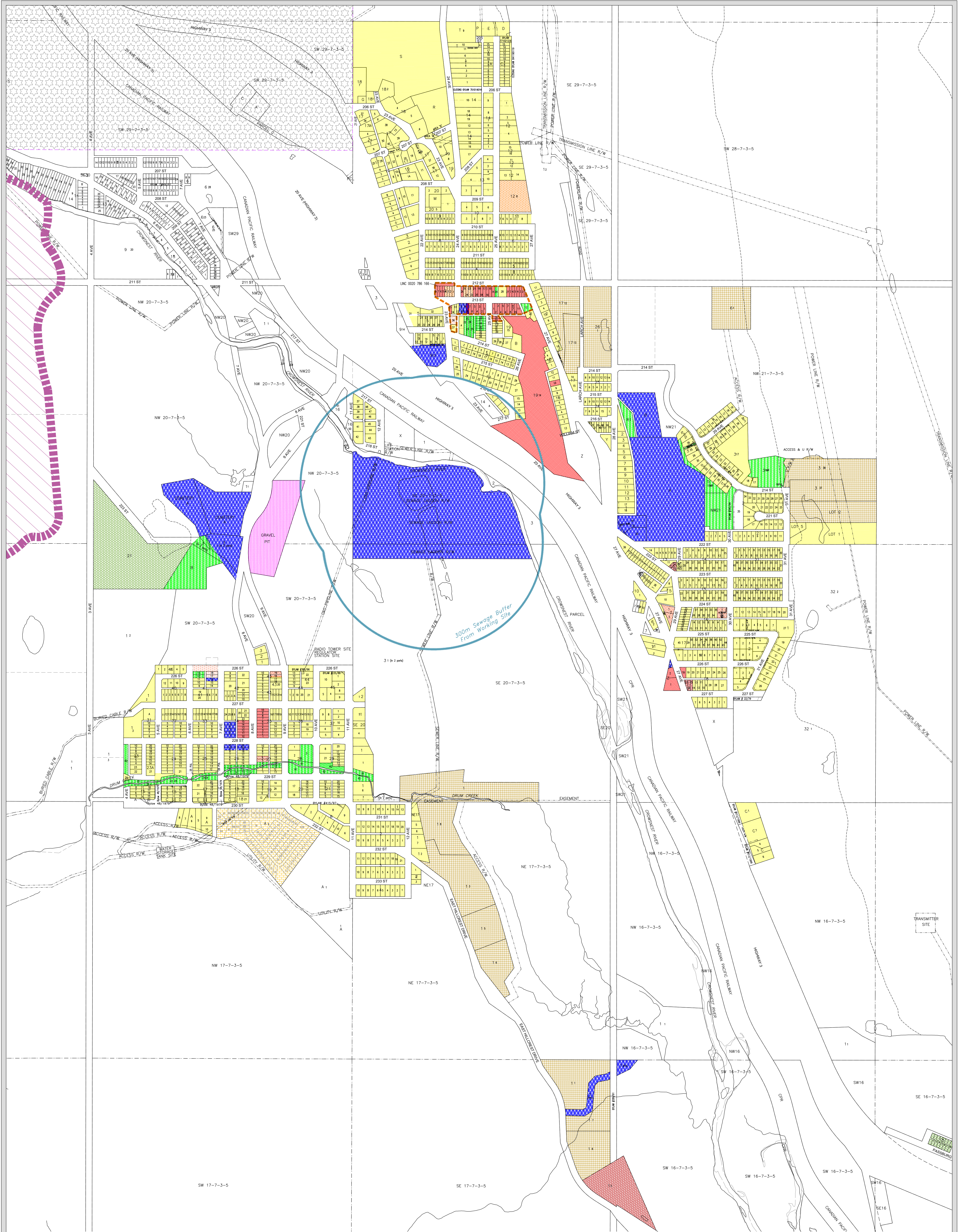


LAND USE DISTRICTS
 BYLAW NO. 1165, 2023; DECEMBER 5, 2023
 Amended to and including Bylaw No. 1182, 2024

- | | | |
|---|--|-------|
|  | Residential | R-1 |
|  | Grouped Country Residential | GCR-1 |
|  | Retail Commercial | C-1 |
|  | Drive-In Commercial | C-2 |
|  | Recreation & Open Space | RO-1 |
|  | Public | P-1 |
|  | Non-Urban Tourism Accommodation and Recreation | NUTAR |
|  | Non-Urban Area | NUA-1 |

MAP 2

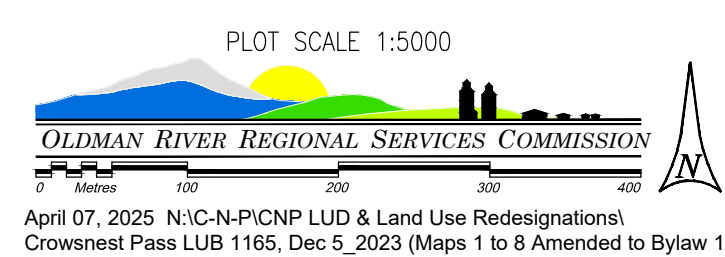




LAND USE DISTRICTS
 BYLAW NO. 1165, 2023; DECEMBER 5, 2023
 Amended to and including Bylaw No. 1207, 2024

- | | | |
|--|--|-------|
| | Residential | R-1 |
| | Duplex Or Semi-Detached Residential | R-2 |
| | Medium Density Residential | R-2A |
| | High Density Residential | R-3 |
| | Manufactured Home Communities | R-4 |
| | Grouped Country Residential | GCR-1 |
| | Retail Commercial | C-1 |
| | Drive-In Commercial | C-2 |
| | Industrial | I-1 |
| | Recreation & Open Space | RO-1 |
| | Public | P-1 |
| | Non-Urban Tourism Accommodation and Recreation | NUTAR |
| | Non-Urban Area | NUA-1 |
| | Turtle Mountain Restricted Development Area | DC-1 |
| | Restricted Development Area | RDA |
| | Historic Commercial Areas Overlay | |

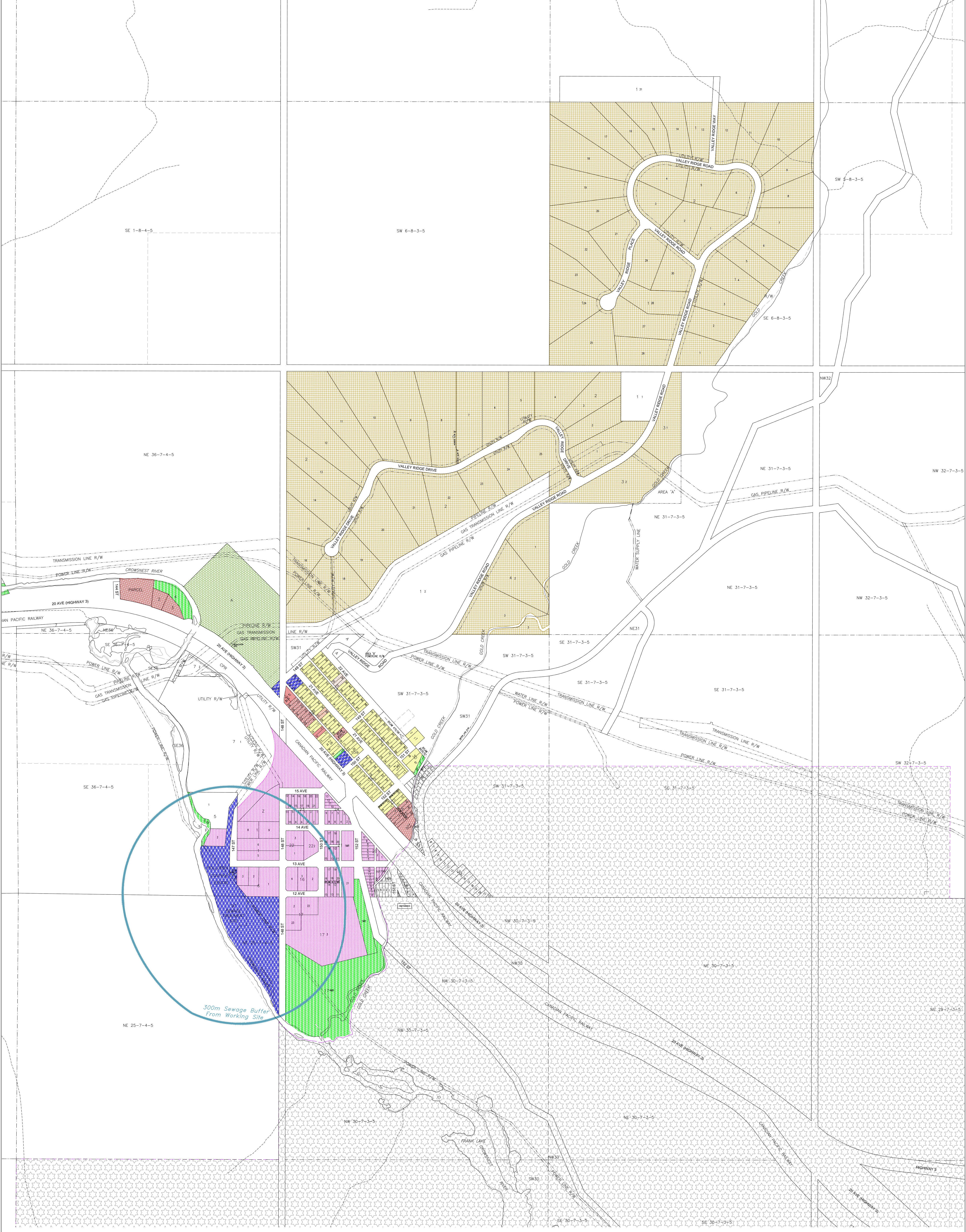
MAP 3



April 07, 2025 N:\C:\N\PC\NPL\UD & Land Use Redesignations\ Crowsnest Pass LUB 1165, Dec 5, 2023 (Maps 1 to 8 Amended to Bylaw 1214-2024).dwg

MUNICIPALITY OF CROWSNEST PASS
- BELLEVUE / HILLCREST AREA

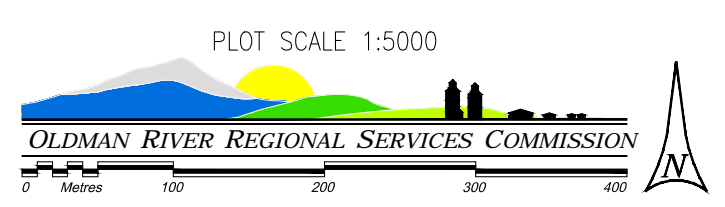
MUNICIPALITY OF CROWSNEST PASS
 BELLEVUE / HILLCREST LAND USE DISTRICT MAP 3



LAND USE DISTRICTS
 BYLAW NO. 1165, 2023; DECEMBER 5, 2023
 Amended to and including Bylaw No. 1182, 2024.

- | | | |
|---|--|-------|
|  | Residential | R-1 |
|  | Duplex Or Semi-Detached Residential | R-2 |
|  | Medium Density Residential | R-2A |
|  | Grouped Country Residential | GCR-1 |
|  | Retail Commercial | C-1 |
|  | Drive-In Commercial | C-2 |
|  | Industrial | I-1 |
|  | Recreation & Open Space | RO-1 |
|  | Public | P-1 |
|  | Non-Urban Tourism Accommodation and Recreation | NUTAR |
|  | Non-Urban Area | NUA-1 |
|  | Restricted Development Area | RDA |

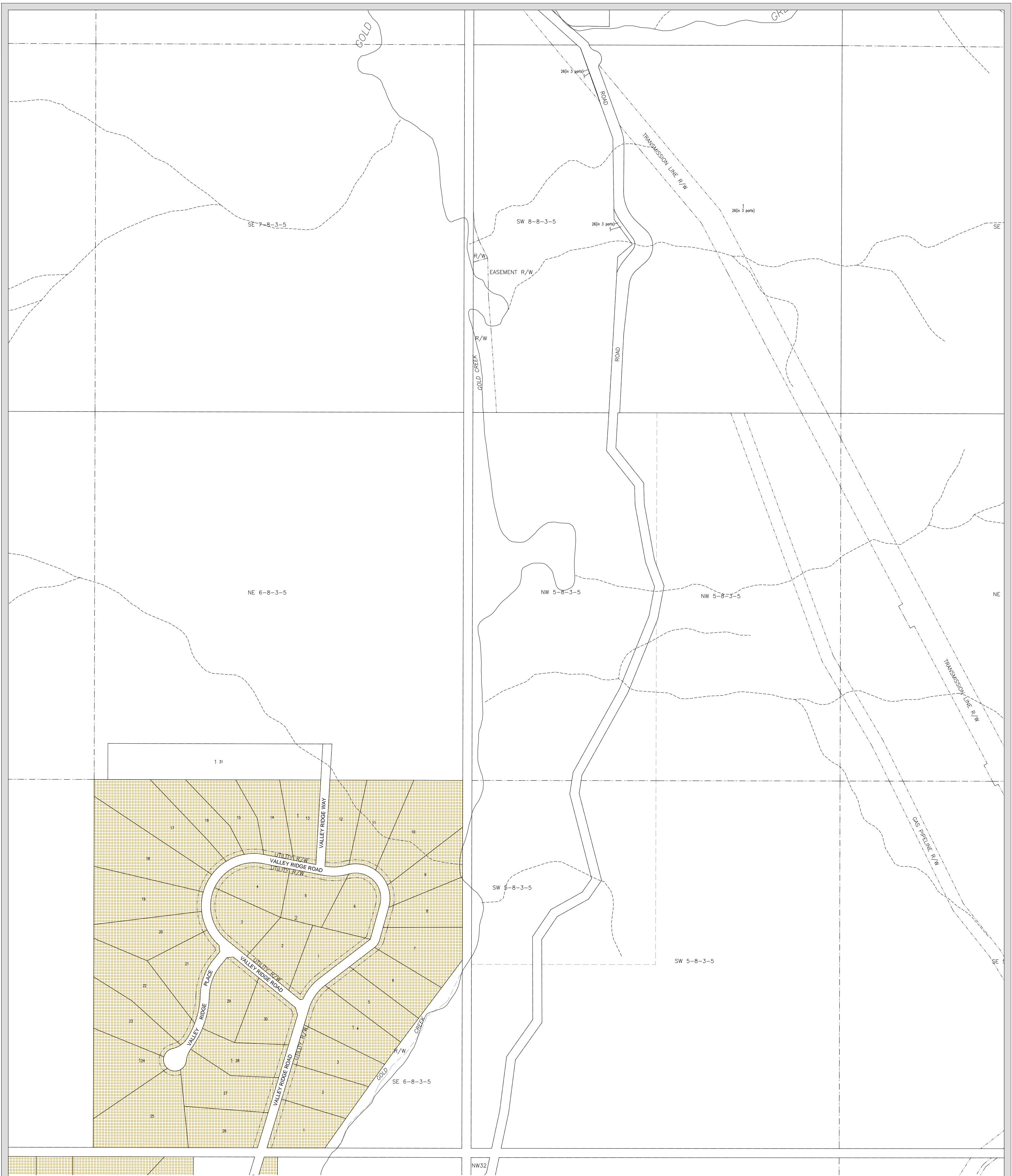
MAP 4



PLOT SCALE 1:5000
 March 14, 2025 C:\Users\CARLIN-1\AppData\Local\Temp\AcPublish_9256\ Crownsnest Pass LUB 1165, Dec 5, 2023 (Maps 1 to 8 Amended to Bylaw 1214-2024).dwg

MUNICIPALITY OF CROWSNEST PASS - FRANK AREA

MUNICIPALITY OF CROWSNEST PASS
 FRANK LAND USE DISTRICT MAP 4



LAND USE DISTRICTS
 BYLAW NO. 1165, 2023; DECEMBER 5, 2023

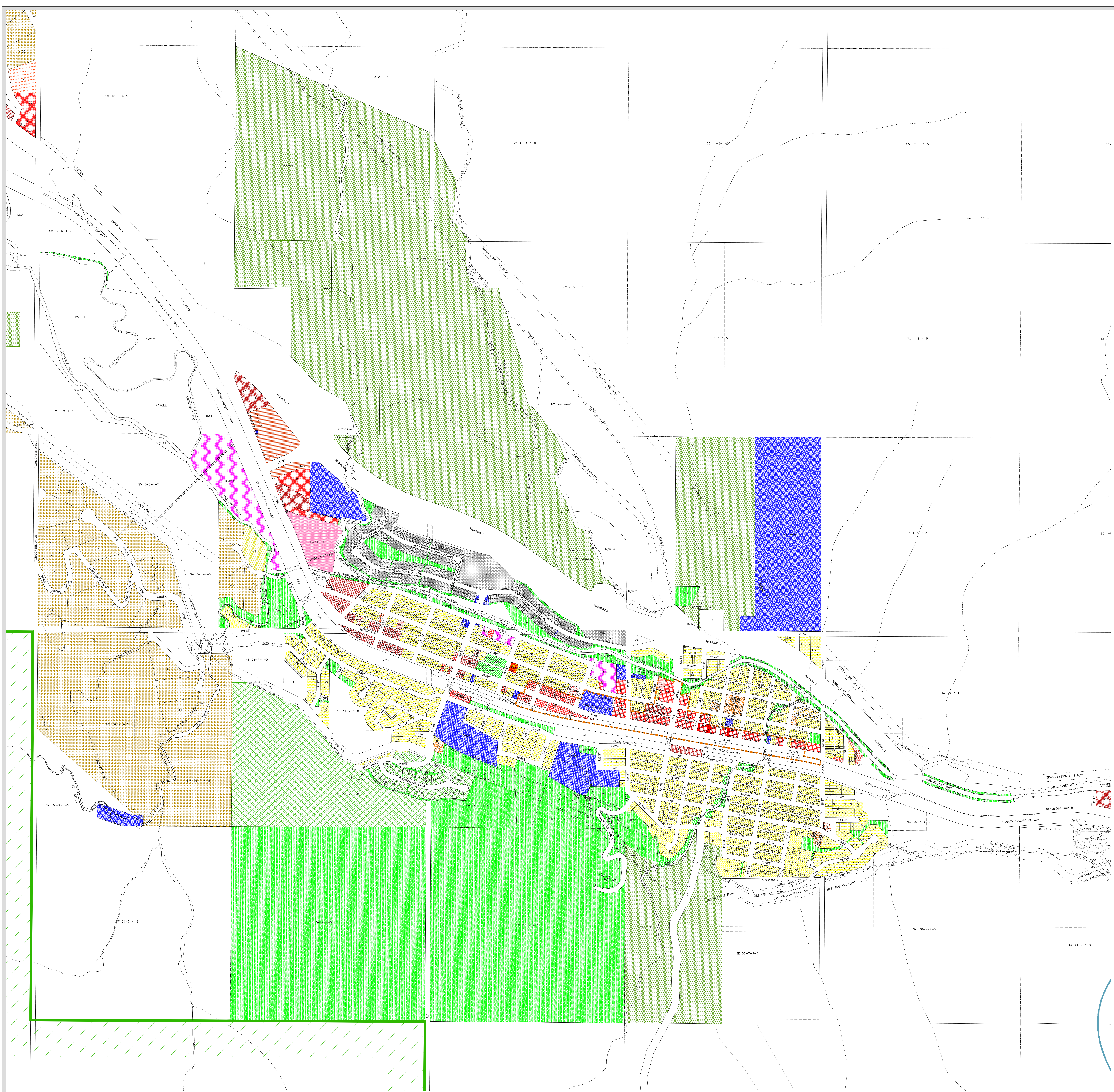
 Grouped Country Residential GCR-1
 Non-Urban Area NUA-1

MAP 4A

**MUNICIPALITY OF
 CROWSNEST PASS
 - FRANK AREA**

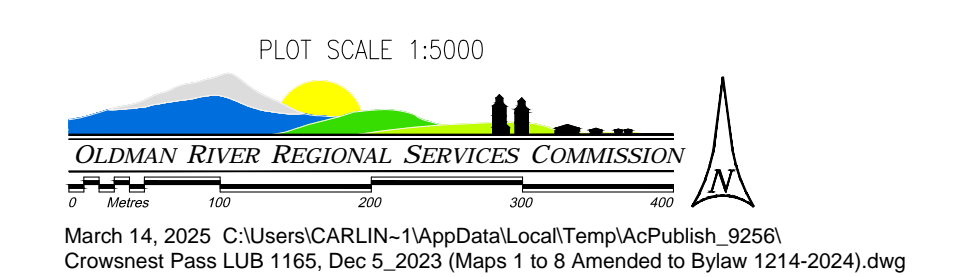
MUNICIPALITY OF CROWSNEST PASS
 FRANK LAND USE DISTRICT MAP 4A



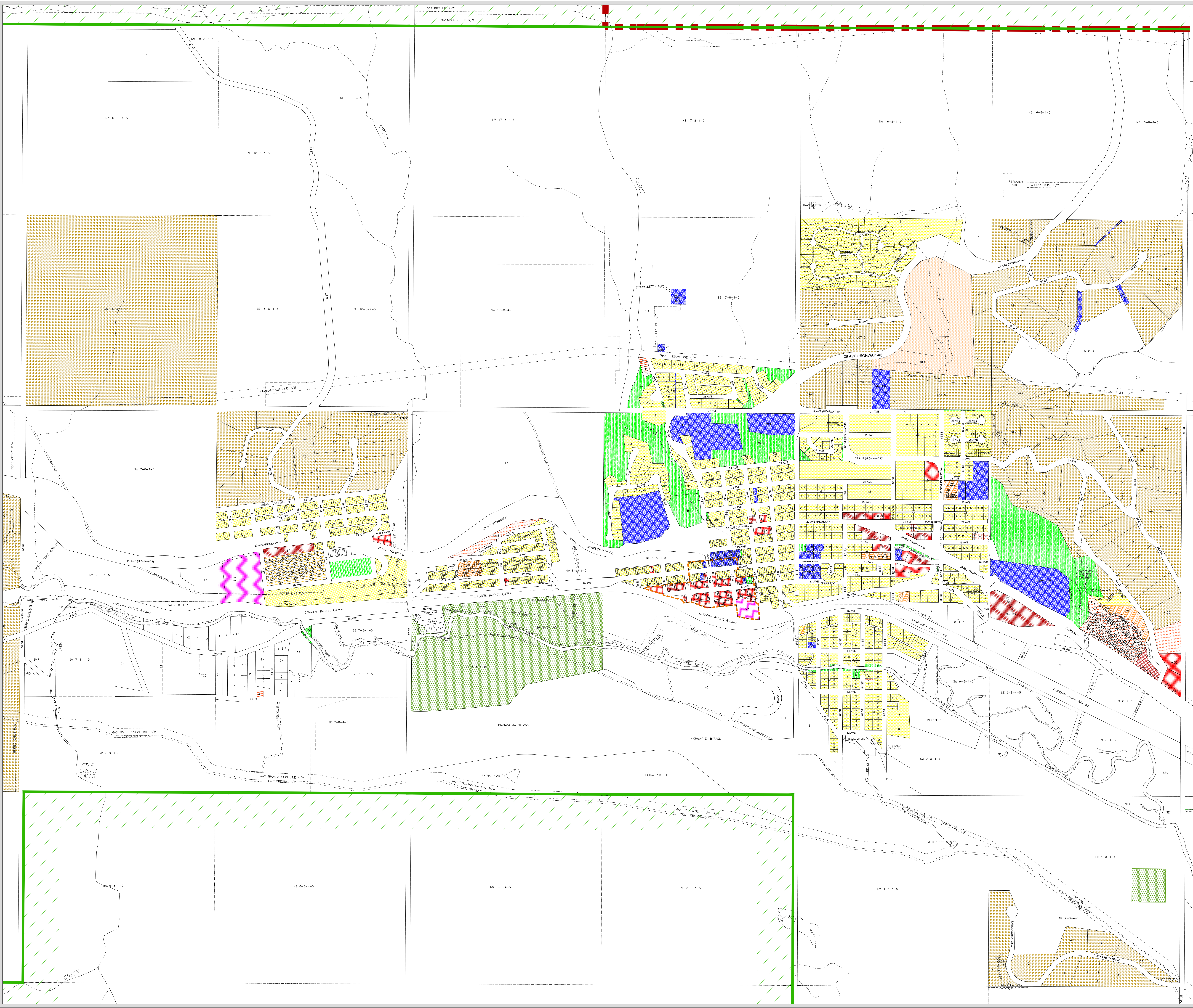


- LAND USE DISTRICTS**
 BYLAW NO. 1165, 2023; DECEMBER 5, 2023
 Amended to and including Bylaw No. 1214, 2024
- | | | |
|--|--|-------|
| | Residential | R-1 |
| | Duplex Or Semi-Detached Residential | R-2 |
| | Medium Density Residential | R-2A |
| | High Density Residential | R-3 |
| | Manufactured Home Communities | R-4 |
| | Narrow Lot Residential | R-5 |
| | Grouped Country Residential | GCR-1 |
| | Retail Commercial | C-1 |
| | Drive-In Commercial | C-2 |
| | Comprehensive Commercial | C-3 |
| | Comprehensive Mixed Use District | CM-1 |
| | Cannabis Retail Commercial | C-4 |
| | Industrial | I-1 |
| | Recreation & Open Space | RO-1 |
| | Public | P-1 |
| | Non-Urban Tourism Accommodation and Recreation | NUTAR |
| | Urban Tourism Accommodation and Recreation | UTAR |
| | Non-Urban Area | NUA-1 |
| | Comprehensive Ski Village | CSV |
| | No Land Use Assigned | |
| | Historic Commercial Areas Overlay | |

MAP 5

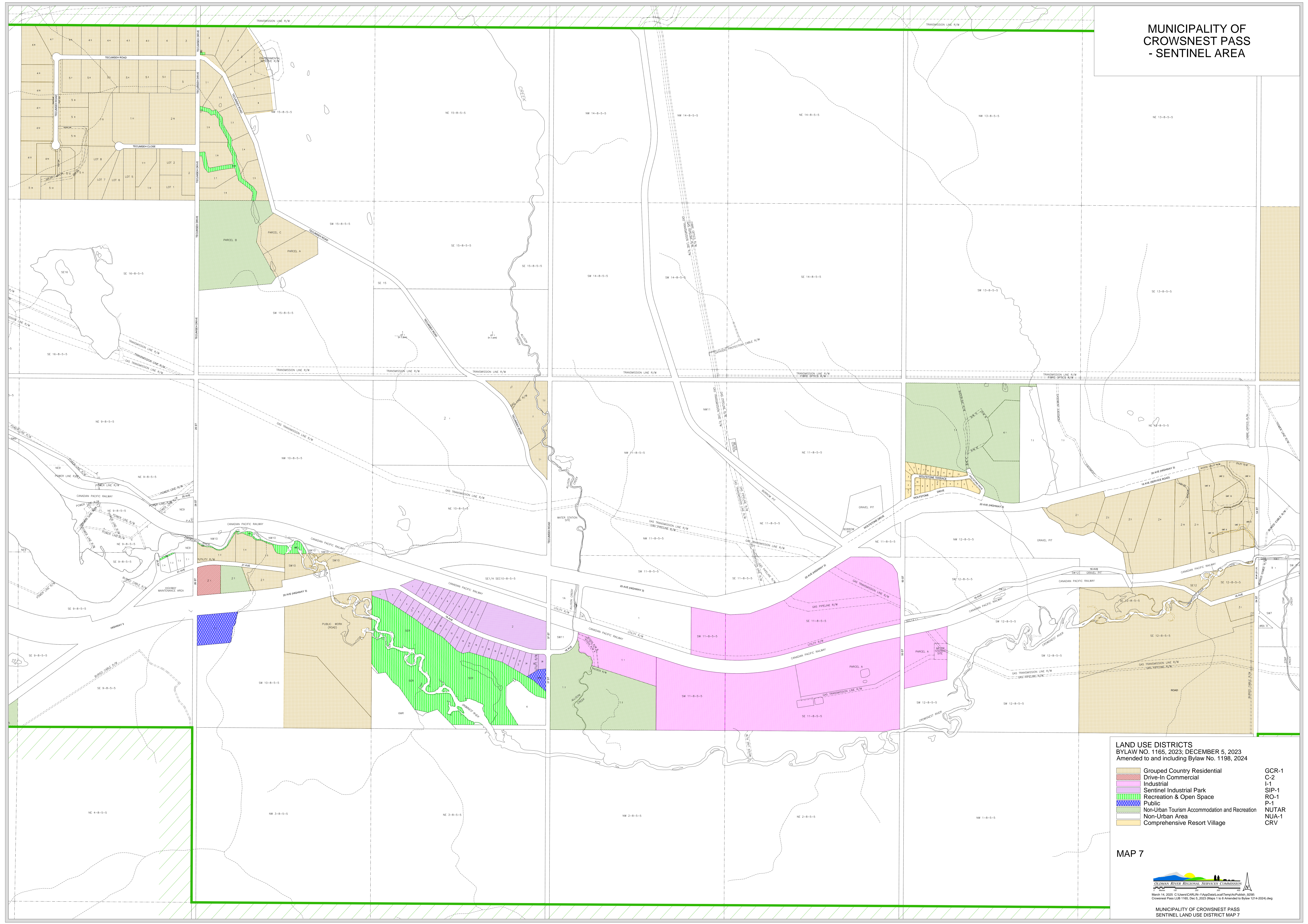


MUNICIPALITY OF CROWSNEST PASS
- COLEMAN AREA



- LAND USE DISTRICTS**
 BYLAW NO. 1165, 2023; DECEMBER 5, 2023
 Amended to and including Bylaw No. 1210, 2024
- Residential
 - Duplex Or Semi-Detached Residential
 - Medium Density Residential
 - High Density Residential
 - Manufactured Home Communities
 - Grouped Country Residential
 - Retail Commercial
 - Drive-In Commercial
 - Industrial
 - Recreation & Open Space
 - Public
 - Non-Urban Tourism Accommodation and Recreation
 - Non-Urban Area
 - Historic Commercial Areas Overlay
- R-1
 - R-1A
 - R-2
 - R-2A
 - R-3
 - R-4
 - GCR-1
 - C-1
 - C-2
 - I-1
 - RO-1
 - P-1
 - NUTAR
 - NUA-1

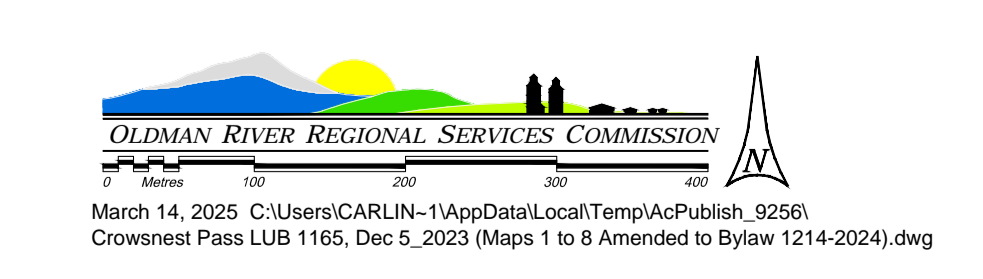
MUNICIPALITY OF CROWNEST PASS
- SENTINEL AREA



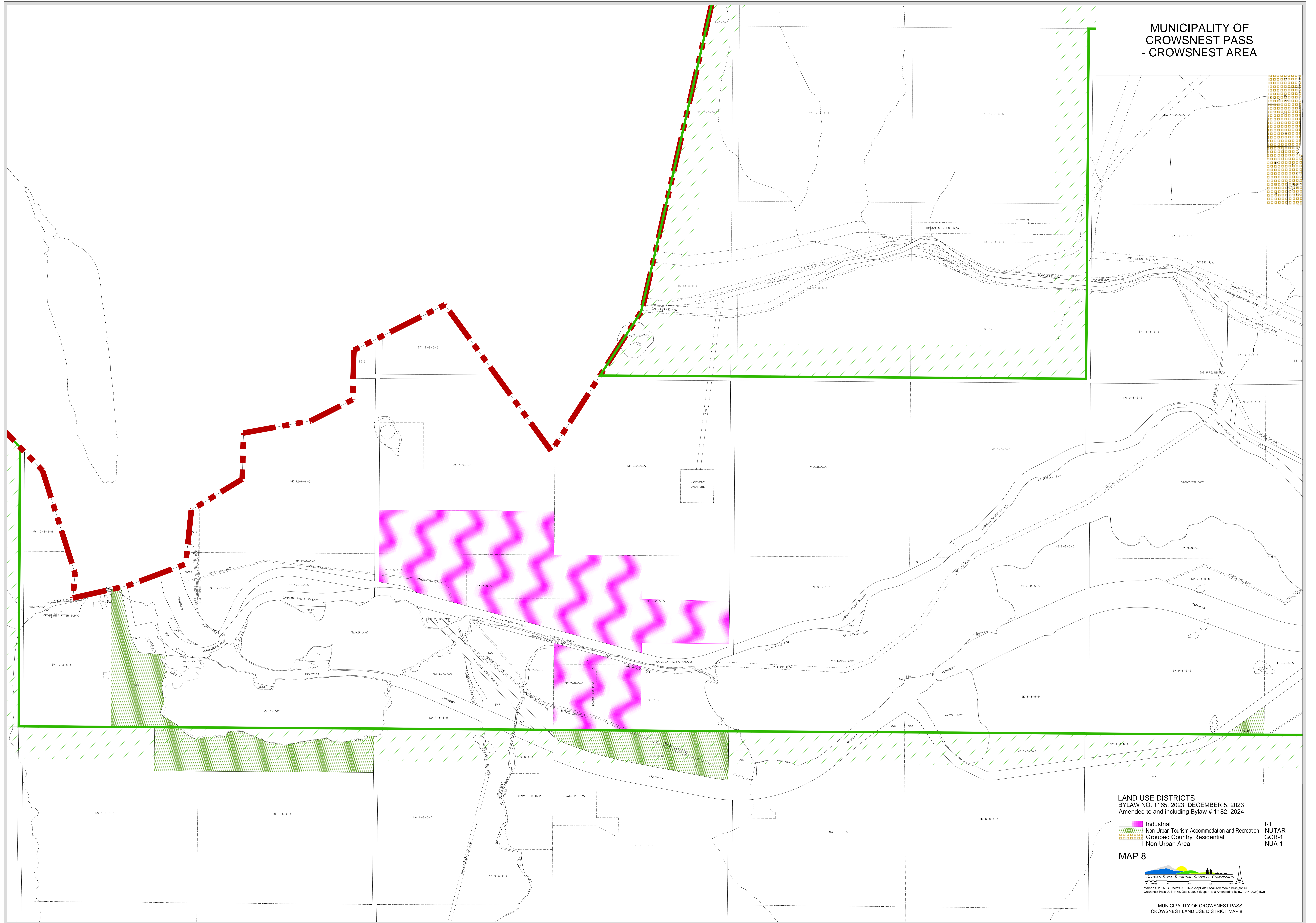
LAND USE DISTRICTS
BYLAW NO. 1165, 2023; DECEMBER 5, 2023
Amended to and including Bylaw No. 1198, 2024

	Grouped Country Residential	GCR-1
	Drive-In Commercial	C-2
	Industrial	I-1
	Sentinel Industrial Park	SIP-1
	Recreation & Open Space	RO-1
	Public	P-1
	Non-Urban Tourism Accommodation and Recreation	NUTA-1
	Non-Urban Area	NUA-1
	Comprehensive Resort Village	CRV

MAP 7



MUNICIPALITY OF
CROWSNEST PASS
- CROWSNEST AREA



LAND USE DISTRICTS
BYLAW NO. 1165, 2023; DECEMBER 5, 2023
Amended to and including Bylaw # 1182, 2024

- Industrial
- Non-Urban Tourism Accommodation and Recreation
- Grouped Country Residential
- Non-Urban Area
- I-1
- GCR-1
- NUA-1

MAP 8



March 14, 2025 C:\Users\CARL.N\1\AppData\LocalTemp\AsP\Output_25261
Crownsnest Pass LUB 1165, Dec 5, 2023 (Map 1 to 8 Amended to Bylaw 1214-2024).dwg

MUNICIPALITY OF CROWSNEST PASS
CROWSNEST LAND USE DISTRICT MAP 8